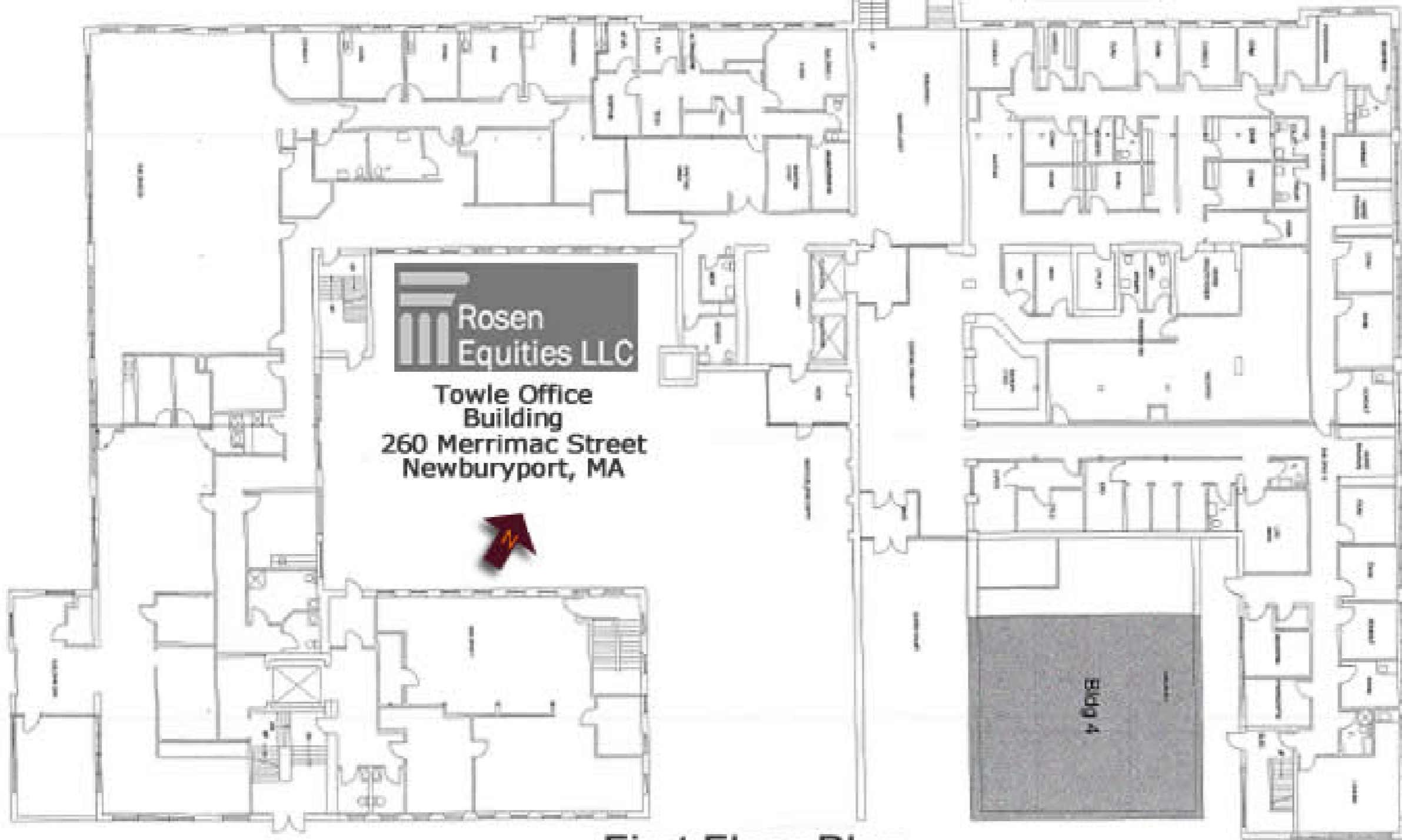


# Merrimac Street



**First Floor Plan**  
**26,793.8 SF**

Unit	SQFT	Tenant
100	1,390	Healthcare Complete
103	8,717	d/b/a FMC DIALYSIS SERVICES OF NEWBURYPORT, MA
105	27,310	Mass General Brigham Medical Group - Pentucket
109	1,400	Riverside Cafe and Diner Inc.
200	7,572	DORE & WHITTIER, INC.
212	694	AVAILABLE
301	9,825	AVAILABLE
303	30,522	DARLING CONSULTING GROUP