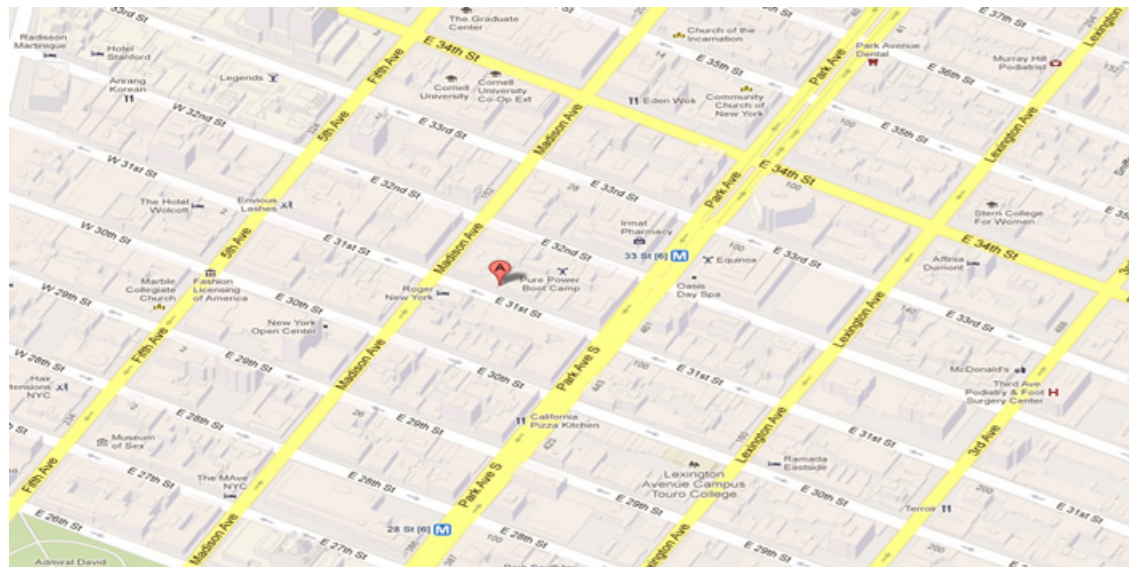




29 EAST 31ST ST, New York, NY 10016



14000 SF

Up to 5,700 SF Available

Office Building located in Murray Hill section of NYC

Built: 1920

Tenants

I.G. MOGHADAM RUG CORP.

JULIAN WALKER STUDIO LLC

TECHNETRON, INC

Flatiron/23rd Street Partnership District Manageme

For more information call

1- 212- 249- 1550

KOEPPEL ROSEN

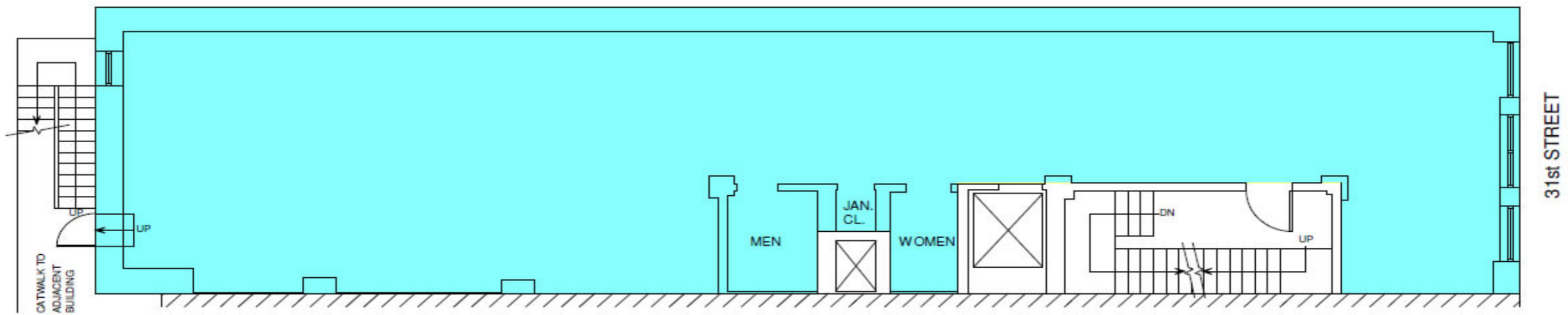
40 East 69th Street

New York, NY 10021

mkoepfel@koepfelrosen.com

29 East 31st Street

Typical Floor Plan



For more information call
1-212-249-1550
KOEPEL ROSEN
40 East 69th Street
New York, NY 10021
mkoepfel@koepfelrosen.com