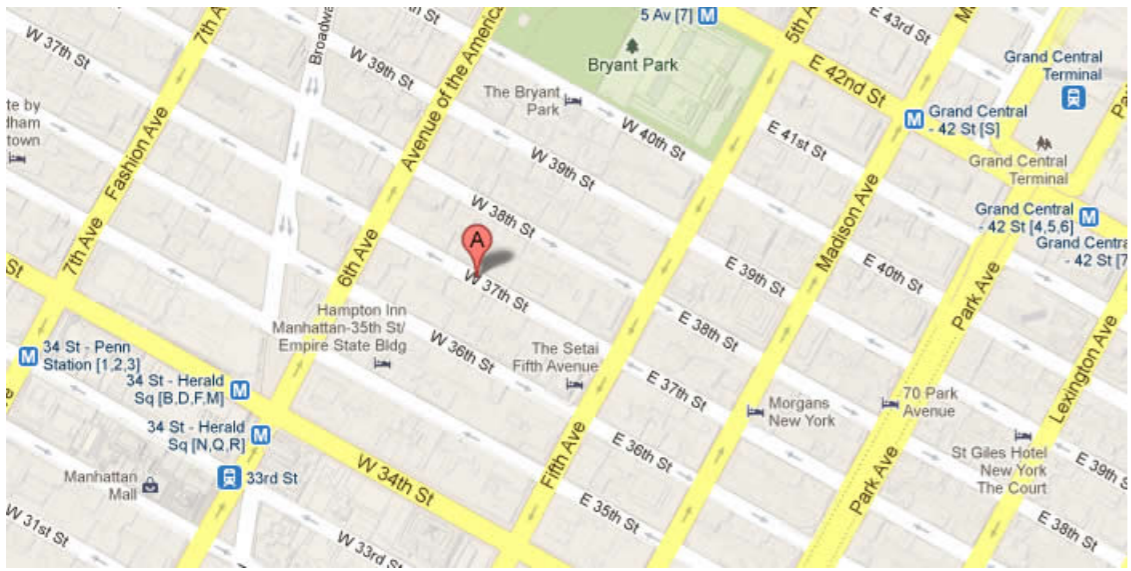




37 WEST 37TH STREET, New York, NY 10018



61722 SF

Up to 15,357 SF Available

Office building with modern marble lobby  
and 24 hour access

Built: 1915 Architect: Herman Lee Meader

#### Tenants

E.W. HOWELL CO., LLC

New York Nishiki LLC

EZRASONS, INC.

DWM DANCE STUDIO MIDTOWN LLC

KIM SEYBERT INC.

For more information call

1- 212- 249- 1550

KOEPEL ROSEN

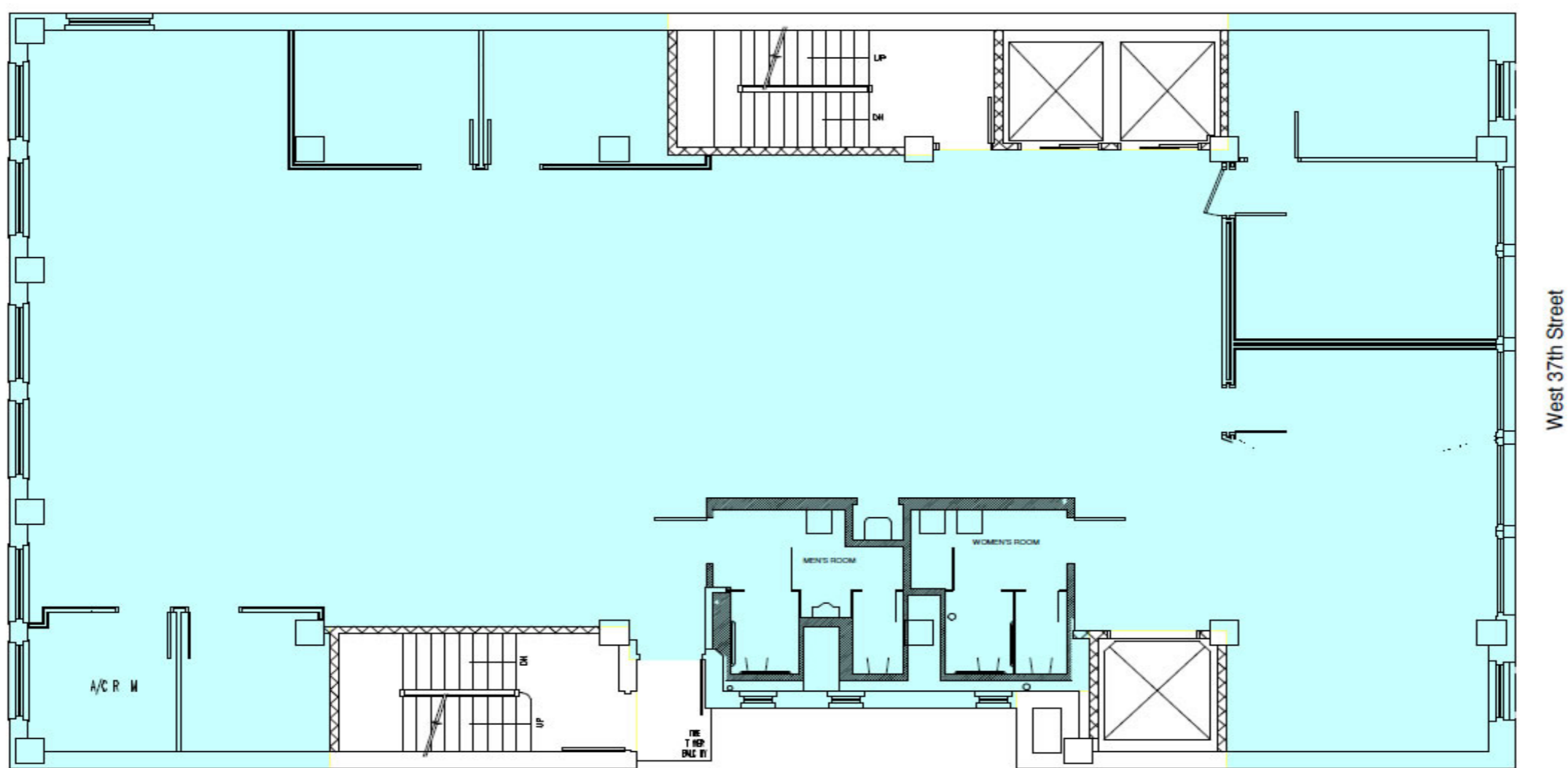
40 East 69th Street

New York, NY 10021

[mkoepfel@koeppelrosen.com](mailto:mkoepfel@koeppelrosen.com)

**37 West 37th Street**

**Typical Floor Plan**



Koeppel Rosen LLC

40 East 69th Street  
New York, NY 10021  
212-249-1550  
www.koeppelrosen.com

Note: All dimensions and conditions are approximate and for information only

Scale: NTS

Date: February .10, 2016



For more information call  
1- 212- 249- 1550  
KOEPEL ROSEN  
40 East 69th Street  
New York, NY 10021  
mkoeppe@koeppelrosen.com