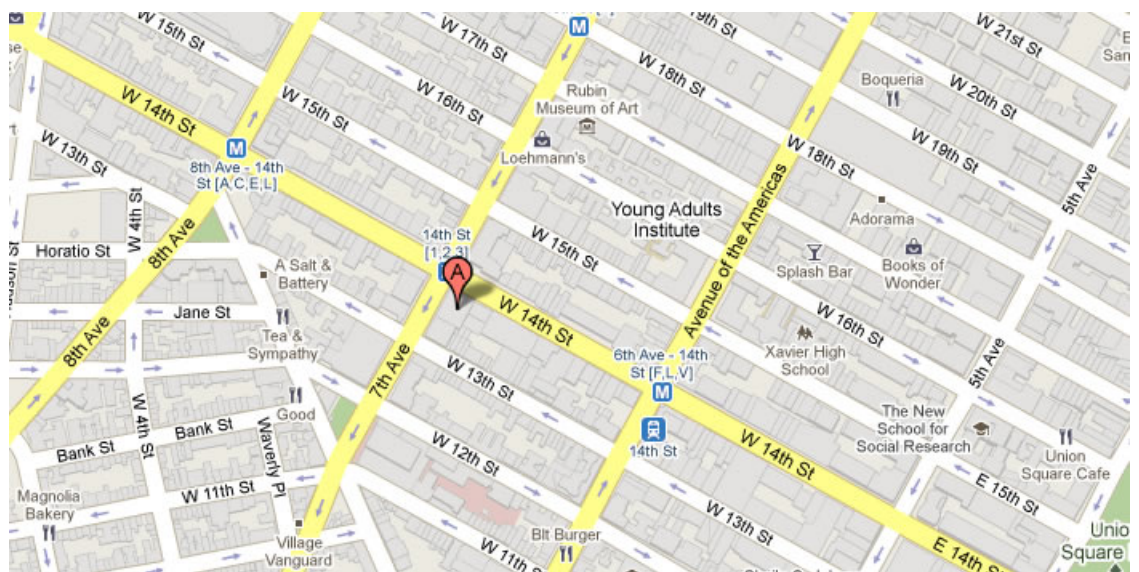




Rosen
Equities LLC

154 WEST 14TH STREET, New York, NY 10011



166626 SF

Up to 49,070 SF Available

This glazed, colored terra cotta office building combines the styles of Art Nouveau and Art Deco. Features attended lobby, new elevator cabs operable windows and subway station at street corner

Buit: 1913 Architect: Herman Lee Meader

Tenants

For more information call

1- 212- 249- 1550

KOEPPEL ROSEN

40 East 69th Street

New York, NY 10021

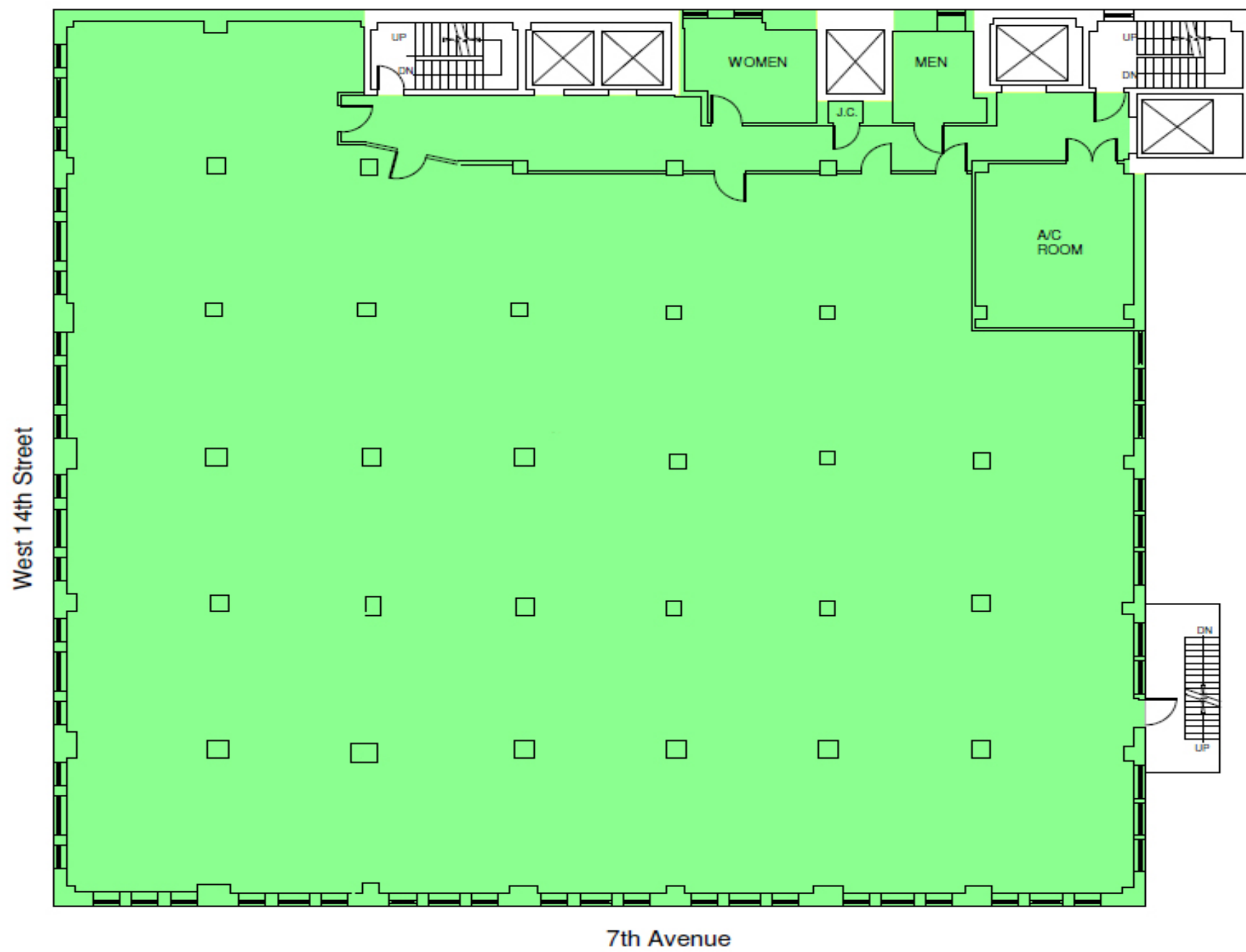
mkoeppeel@koeppeelrosen.com



154 WEST 14TH STREET, New York, NY 10011

154 West 14th Street

Typical Floor Plan



Koeppel Rosen LLC

40 East 69th Street
New York, NY 10021
212-249-1550
www.koeppelrosen.com

Note: All dimensions and conditions are approximate and for information only

Scale: NTS

Date: February .18, 2016



For more information call

1- 212- 249- 1550

KOEPPEL ROSEN

40 East 69th Street

New York, NY 10021

mkoeppel@koeppelrosen.com