



245 WEST 29TH STREET, New York, NY 10001



99588 SF

Up to 57,948 SF Available

Office building with street-level retail
24 hour access, concrete floors and
easy access to Bus Lines, Metro/Subway
Built: 1929 Architect: Julius Eckmann

Tenants

QUICK RESPONSE SERVICE, INC.
PAUL GELSOBELLO, an individual
JOHN ROBshaw INC.
BUCK MOORHEAD ARCHITECT
THOMAS BARBOUR AND

For more information call

1- 212- 249- 1550

KOEPEL ROSEN

40 East 69th Street

New York, NY 10021

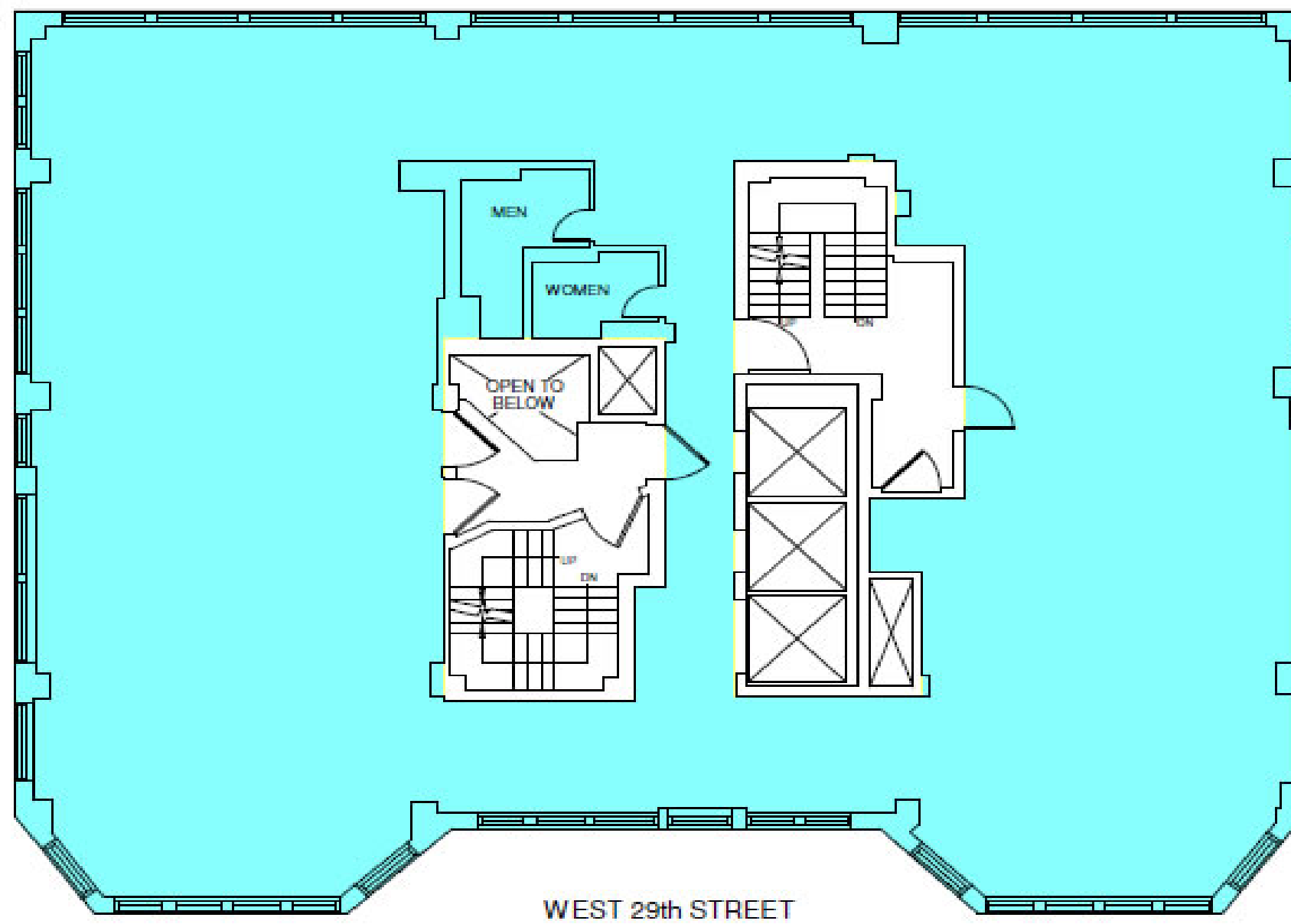
mkoepfel@koeppelrosen.com



245 WEST 29TH STREET, New York, NY 10001

245 West 29th Street

Typical Floor Plan



40 East 69th Street
New York, NY 10021
212-249-1550
www.koeppelrosen.com

Note: All dimensions and conditions are approximate and for information only.

Scale: NTS
Date: February 18, 2016



For more information call
1- 212- 249- 1550
KOEPEL ROSEN
40 East 69th Street
New York, NY 10021
mkoeppel@koeppelrosen.com