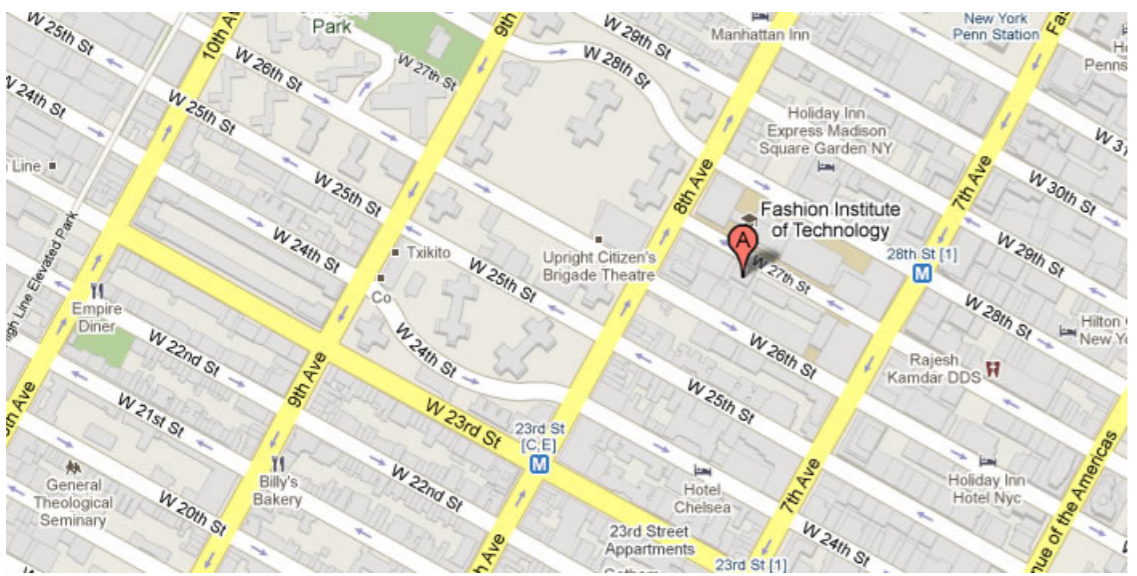




236 WEST 27TH STREET, New York, NY 10001



124588 SF

Up to 11,621 SF Available

Office building with street-level retail featuring 24/7 building access, modernized lobby and easy access to Bus Lines, Metro/Subway
Built: 1928 Architect: William I. Hohauser

Tenants

EDWARD F BOWES
RAINBOWS FLOWERS & FANTASIES INC.
JANE PACKER
Mediakite Corp.
NUFOLIO, INC.

For more information call

1- 212- 249- 1550

KOEPEL ROSEN

40 East 69th Street

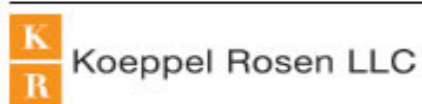
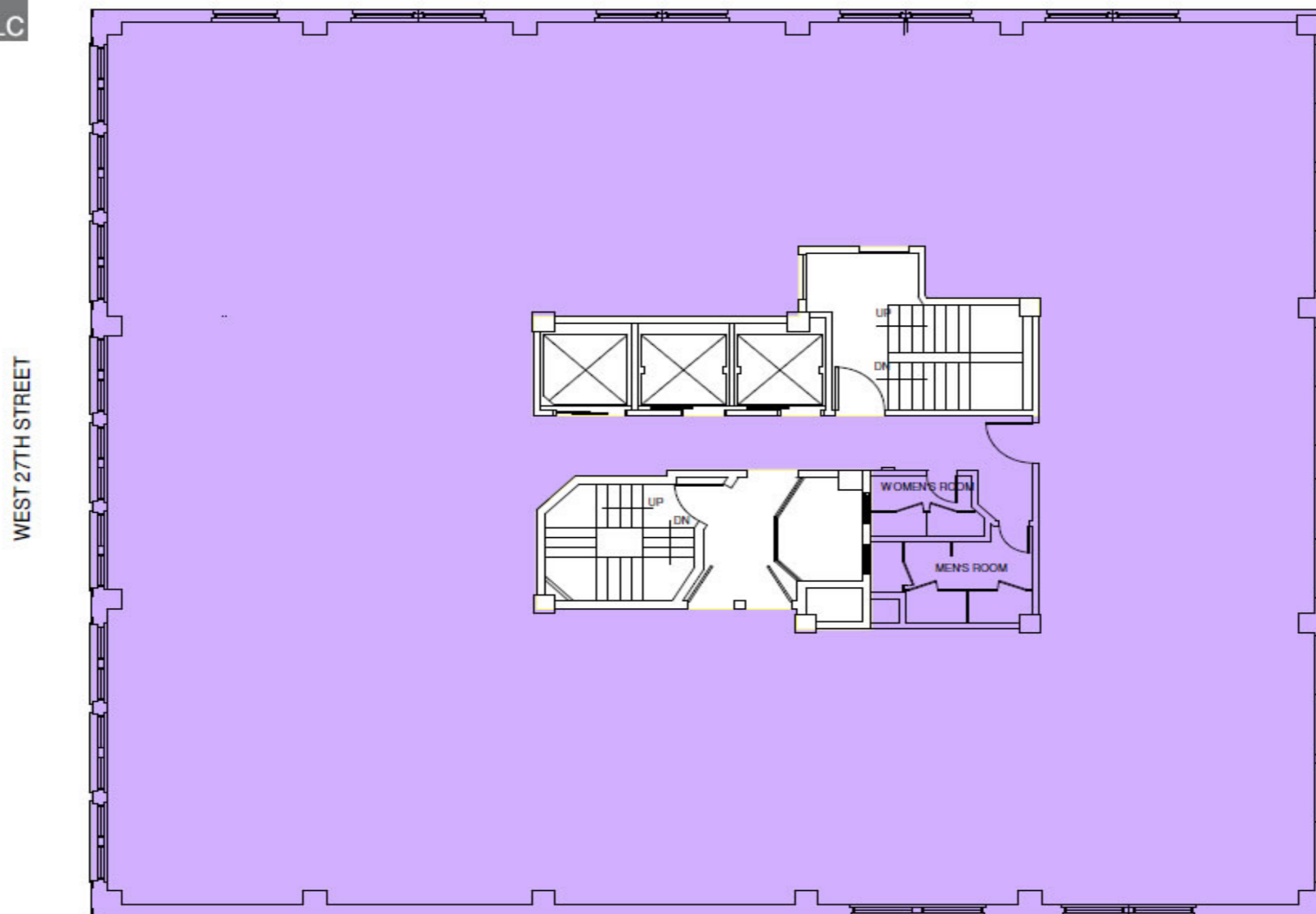
New York, NY 10021

mkoepfel@koeppelrosen.com

236 WEST 27TH STREET, New York, NY 10001

236 West 27th St

Typical Floor Plan



40 East 69th Street
New York, NY 10021
212-249-1550
www.koeppe Rosen.com

Note: All dimensions and conditions are approximate and for information only.

Scale: NTS
Date: February 8, 2016



For more information call
1-212-249-1550
KOEPEL ROSEN
40 East 69th Street
New York, NY 10021
mkoeppe@koeppe Rosen.com