



122 WEST 27TH STREET, New York, NY 10001



135132 SF

Up to 81,731 SF Available

Office building with 24/7 access

Built: 1913 Architect: Townsend, Steinle & Haskell

Tenants

VAN WYCK & VAN WYCK, INC.

For more information call

1- 212- 249- 1550

KOEPEL ROSEN

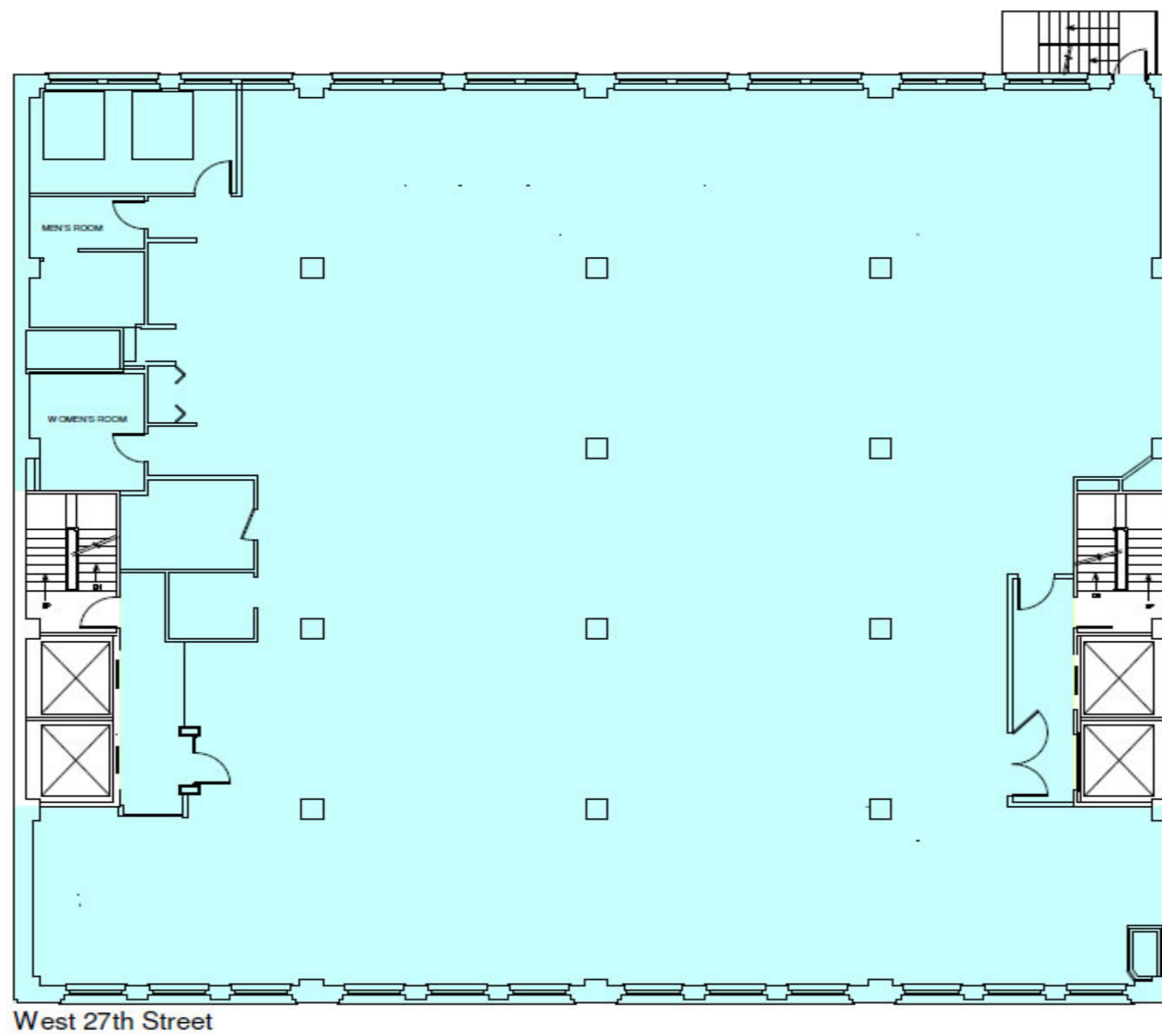
40 East 69th Street

New York, NY 10021

[mkoepfel@koeppelrosen.com](mailto:mkoepfel@koeppelrosen.com)

## 122 West 27th Street

## Typical Floor Plan



For more information call  
1-212-249-1550  
KOEPEL ROSEN  
40 East 69th Street  
New York, NY 10021  
mkoeppe@koeppelrosen.com