



10 EAST 39TH STREET, New York, NY 10016



95364 SF

Up to 18,278 SF Available

Office building with street level retail

Lobby renovated and new elevator cabs installed in 2011

Built: 1915 Architect: Herman Lee Meader

Tenants

CHARM OFFICES LLC

Asia Food, LLC

MRMD CORP.

CJ Global Inc.

10 EAST COPIER INC.

For more information call

1- 212- 249- 1550

KOEPEL ROSEN

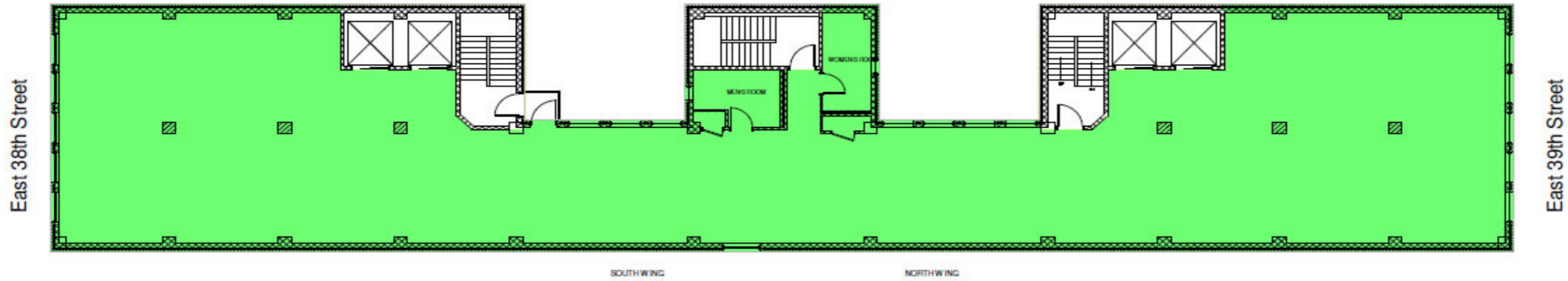
40 East 69th Street

New York, NY 10021

mkoeppel@koeppelrosen.com

10 East 39th Street

Typical Floor Plan



For more information call
1-212-249-1550
KOEPEL ROSEN
40 East 69th Street
New York, NY 10021
mkoeppe@koeppelrosen.com